

TEST PAPER

FIRST GRADE THEORY

Question 1	PITCH	Total Marks 17
-------------------	--------------	-----------------------

A. Name these notes:

5

(i)	(ii)	(iii)	(iv)	(v)
<p>-----</p>				

B. Write these notes as crotchets:

8

(i)	(ii)	(iii)	(iv)

G flat on a line	C in a space	Middle C natural	E flat above the staff
------------------	--------------	------------------	------------------------

C. Insert the correct clef and accidental:

4

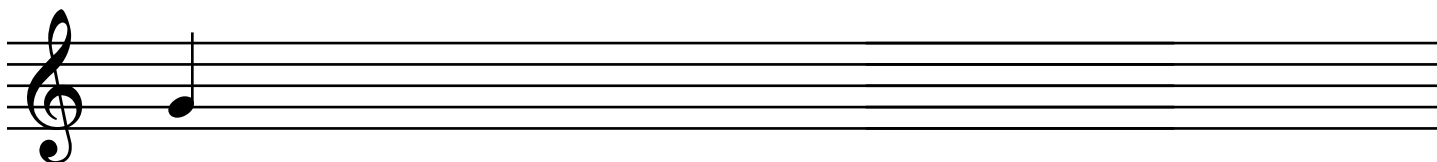
(i)	(ii)

E flat	E natural
--------	-----------

A. Write a scale beginning on the given note

6

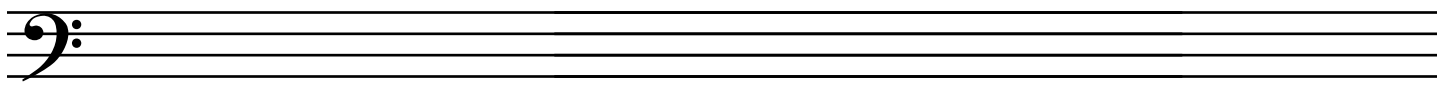
- write one octave going up
- add any accidentals it may need
- mark the semitones with a slur
- complete the scale with a double bar line



B. Write the scale of C major

4

- for one octave going down
- use minims
- mark the tones with a slur
- complete the scale with a double bar line



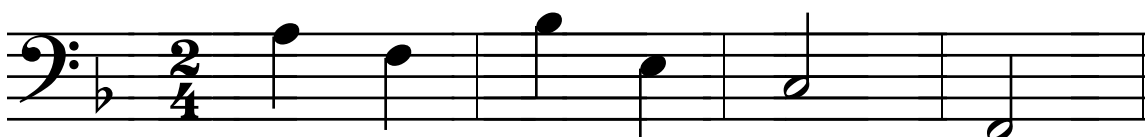
C. Add a clef and any accidentals to make this into an F major scale

2



D. Write the scale degree numbers under the notes of this tune

6



A. Write these intervals above the given notes



(i) (ii) (iii) (iv)

3rd 4th 7th 2nd

B. Name these intervals by number only



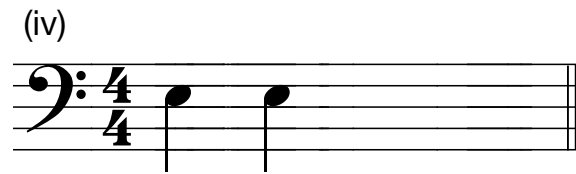
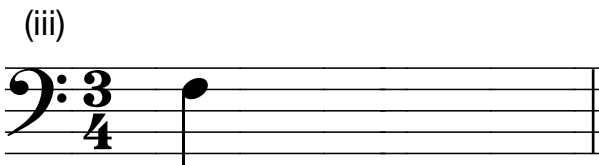
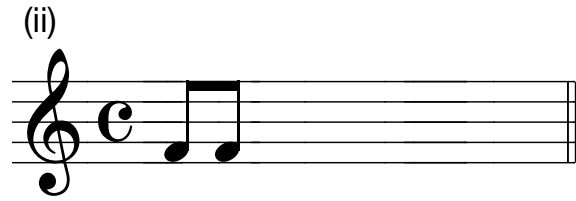
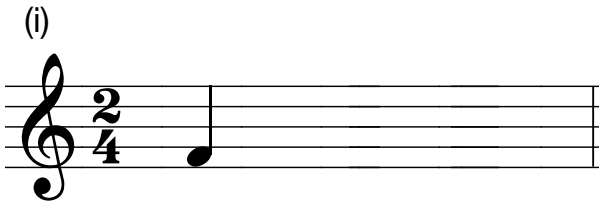
(i) (ii) (iii) (iv)

C. Write the following tonic triads as indicated by the key signatures

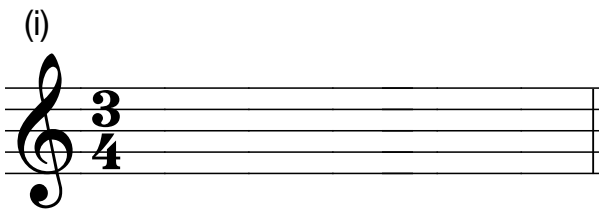


(i) (ii)

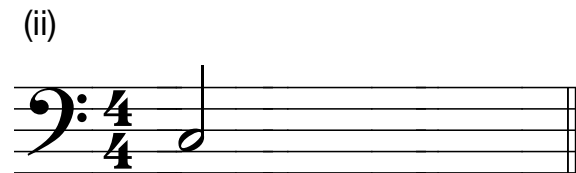
A. Complete each bar with rests

B. Complete these bars as directed

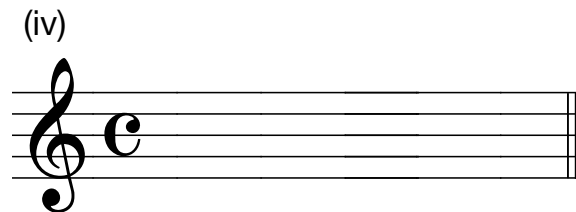
six notes



four notes

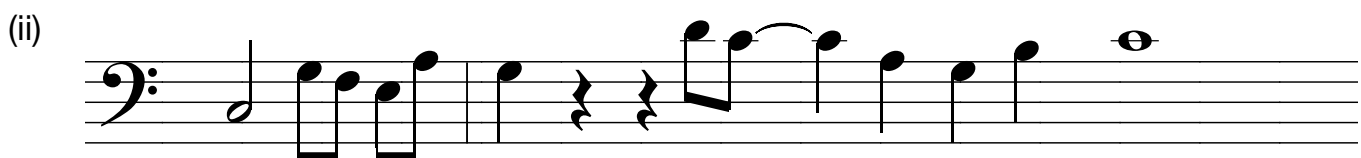
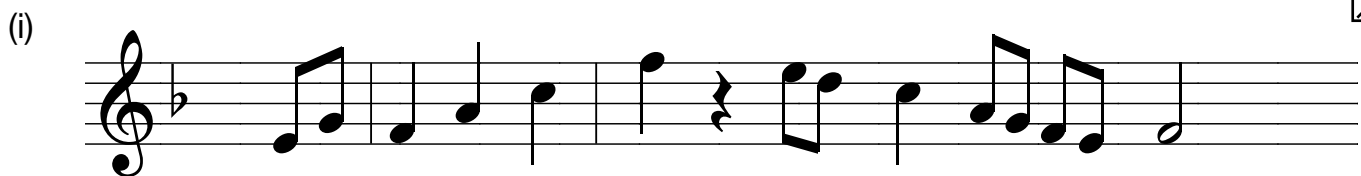


two notes



one note

C. Add a time signature and any missing barlines to these melodies

Important Information

Folk songs are no longer part of the
AMEB syllabus!

You do not have to memorise or
recognise any folk songs at all.

(Yay!)

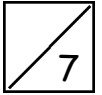
You can simply have the seven marks for this section!!!

(Yay again!)

Transpose this melody down into G major



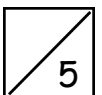
A. To the following melody, add



- i) The missing clef
- ii) The missing time signature
- iii) A sign to lower the pitch of the first note in bar 3
- iv) A tie in an appropriate place
- v) A sign to indicate the notes in bar 3 are to be played legato
- vi) An Italian word to show the melody should be played slowly
- vii) A sign to show the melody should become softer in bars 3 & 4



B. Give the English meaning of the following terms



- i) Ritenuto
.....
- ii) Staccato
.....
- iii) Ritardando
.....
- iv) Moderato
.....
- v) Andante
.....