







TEST PAPER

SECOND GRADE THEORY

Question 1	INTERVALS	Total Marks 12	
-------------------	------------------	-----------------------	--







A. Write these intervals above the given tonic notes



(i)	(ii)	(iii)	(iv)	(v)	(vi)
					
major 2nd	minor 6th	major 7th	major 6th	perfect 5th	major 3rd

B. Name these intervals by number and quality



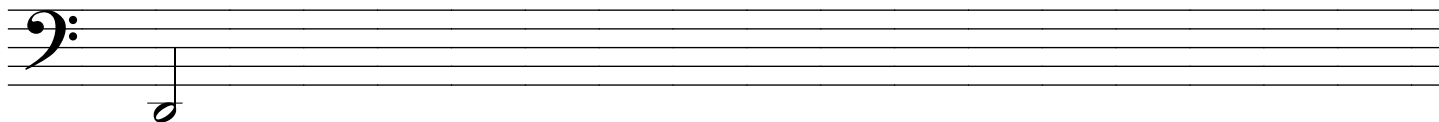
(i)	(ii)	(iii)	(iv)	(v)	(vi)
					

.....

A. Write the harmonic minor scale that starts on the given note



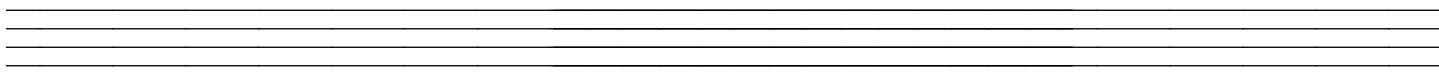
- use accidentals
- write two octaves going up
- mark each tone with a slur
- complete the scale with a double bar line



B. Write the major scale with the key signature of three sharps



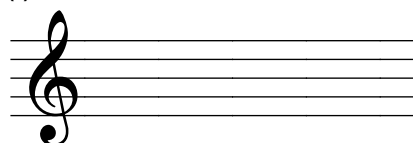
- use treble clef
- use a key signature
- write two octaves going down
- mark the semitones
- use semibreves



C. Write these key signatures

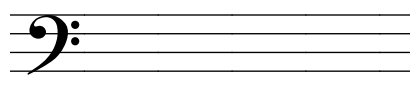


(i)



E minor

(ii)



D major

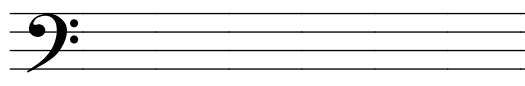
D. Add a clef and any accidentals to make this an A minor scale



A. Write the following tonic triads using key signatures

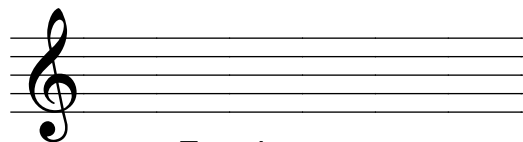
2

(i)



A major

(ii)

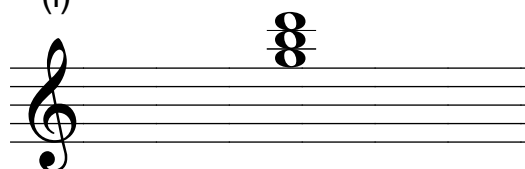


F major

B. Name the key of these tonic triads

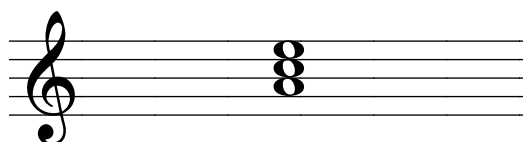
2

(i)



.....

(ii)



.....

Important Information

Folk songs are no longer part of the
AMEB syllabus!

You do not have to memorise or
recognise any folk songs at all.

(Yay!)

You can simply have the eight marks for this section!!!

(Yay again!)

A. Complete each bar with a rest or rests in the correct order

8

(i)

(ii)

(iii)

(iv)

B. Write the time signature for each of these rhythms

4

(i)

(ii)

C. Add a time signature and bar lines to this melody

4

D. At each place marked with an arrow, add **one note** to complete the bar

8

(i)

(ii)

E. Explain the following time signatures as simple or compound then duple, triple or quadruple

2

$\frac{3}{4}$

$\frac{6}{8}$

Question 6

TRANSPPOSITION

Total Marks 10

Transpose this melody down into A minor

10

Question 7

CREATIVE

Total Marks 7

Place an upright line before each accented word or syllable in the following couplet

7

For sixty days I waited for her
But the lady never came

Question 8

TERMS and GENERAL KNOWLEDGE

Total Marks 16

A. Give the English meaning of the following terms

3

- (i) *poco*
- (ii) *maestoso*
- (iii) *sempre*

B. Give the name and meaning of the following signs

3

SIGN	NAME	MEANING

<i>ff</i>

C. Study the melody above and then answer these questions

- (i) What form is this melody in?
- (ii) Mark the main sections using A B or A B A
- (iii) Name the key of the melody
- (iv) Add a sign to pause on the first note in bar 8
- (v) Add a tie in an appropriate place
- (vi) Add a sign to show the melody should end very softly
- (viii) Make any necessary corrections to the rhythm in the last bar