

TEST PAPER

FOURTH GRADE THEORY

Question 1

CREATIVE

Total Marks 10

Answer only ONE part of this question.

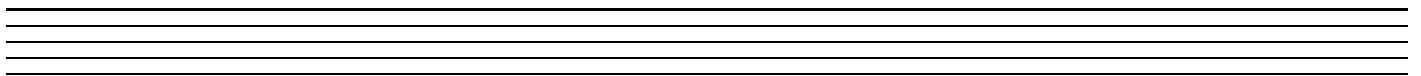
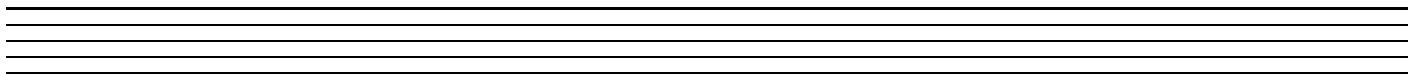
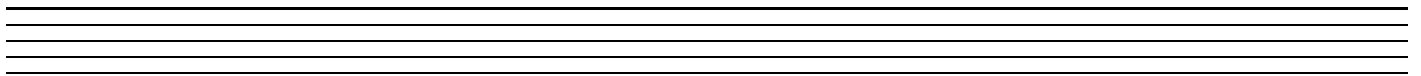
EITHER: Write a melody in F major to this rhythm. Mark the phrasing

The image shows two lines of musical notation in 4/4 time. The first line starts with a 4/4 time signature and a single quarter note. This is followed by a slur over six eighth notes: two beamed eighth notes, a quarter note, a quarter note, a quarter note, and a quarter note. After a bar line, there is a quarter note, a quarter note, a quarter note, and a quarter note. A slur covers the last two notes of this line, which end with a fermata. The second line starts with a slur over five eighth notes: two beamed eighth notes, a quarter note, a quarter note, and a quarter note. After a bar line, there is a quarter note, a quarter note, a quarter note, and a quarter note. A slur covers the last two notes of this line, which end with a fermata. The piece concludes with a double bar line.

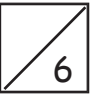
OR Write a melody in B minor to the following couplet:

- Write the words clearly under the notes
- Use hyphens for words with more than one syllable
- Mark the phrasing

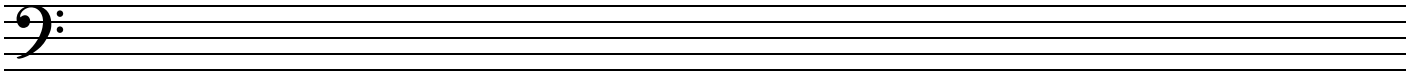
For the most part we wept, so sad were we,
We thought we would never again have glee.



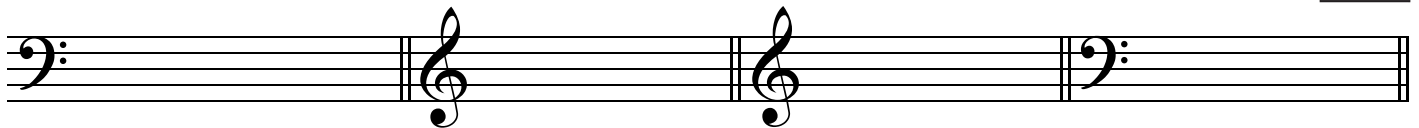
A. Write the minor scale with the key signature of four sharps



- Use a key signature
- Use minims
- Mark any intervals larger than a tone
- Write one octave going down and then up again
- Complete the scale with a double bar line



B. Write the following notes with key signatures



F minor
leading note

G flat major
dominant

F sharp minor
supertonic

B major
submediant

C. For each of these modulating melodies, name:



- The key in which it ends
- The relationship of that key to the opening key



New key: _____

Relationship to the original key: _____

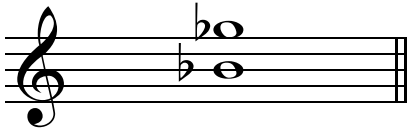


New key: _____

Relationship to the original key: _____

A. Name these intervals by number and quality

3



.....



.....



.....

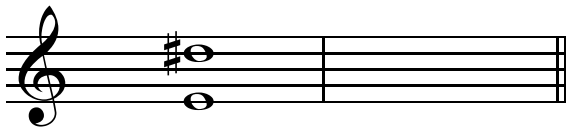
B. Write these intervals above the given notes

5

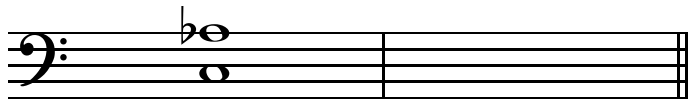
minor 7th perfect 5th diminished 4th minor 3rd major 6th

C. Write the inversions of these intervals and name the inversions

4

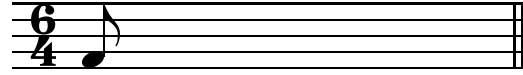
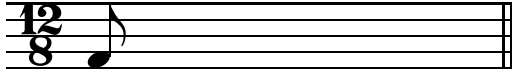


.....



.....

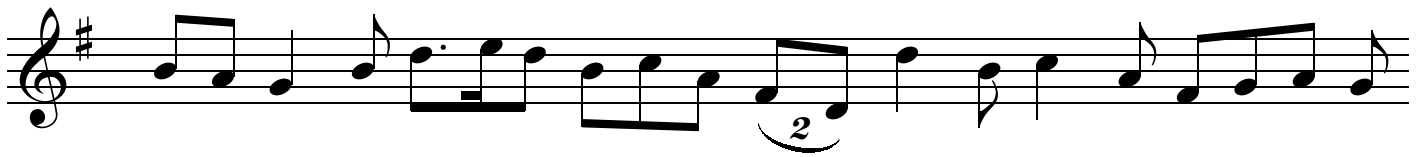
A. Complete the following bars with a rest or rests:



B. Insert the correct time signature to these bars



C. Add a time signature and the missing bar lines to this four bar melody



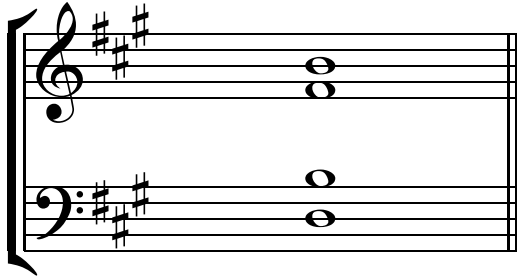
D. Name this rhythmic device



.....

A. Name the key of these subdominant chords and state the position as either root position or first inversion:

4



Key: _____

Position: _____

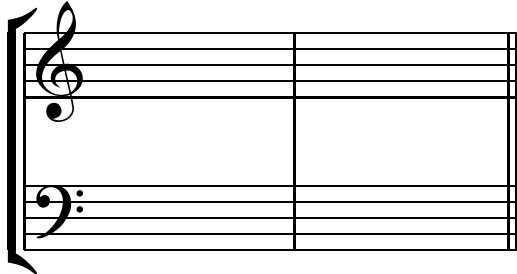


Key: _____

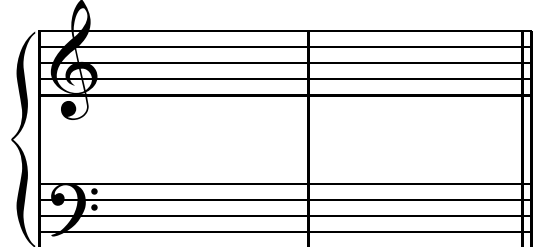
Position: _____

B. Write these cadences with key signatures

6



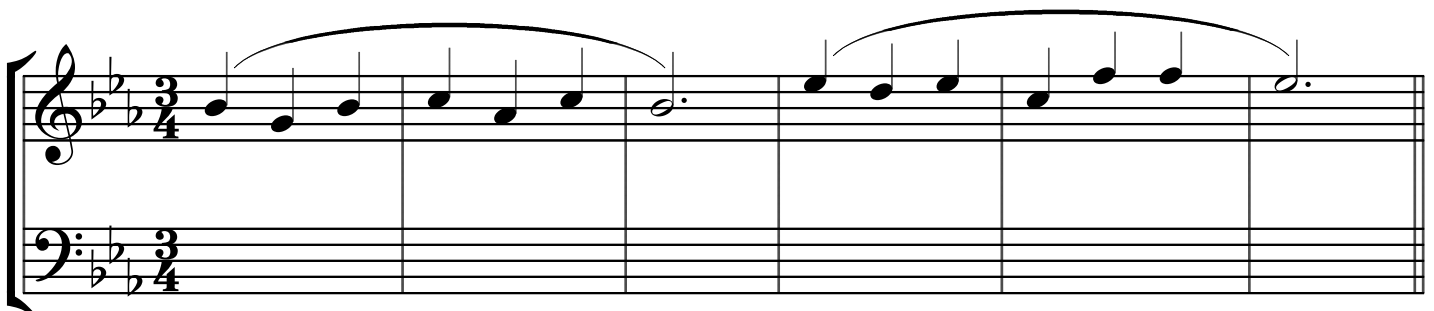
C sharp minor
imperfect cadence
four-part vocal style



B flat major
plagal cadence
four-part vocal style

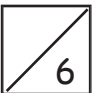
C. Harmonise the following melody in four-part vocal style. Use root position and first inversion chords.

12



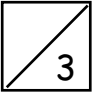
Transpose this melody down into B flat minor.

A. Give the English meaning of the following terms



- i) *tempo comodo*
- ii) *calando*
- iii) *sul ponticello*
- iv) *largamente*
- v) *dolente*
- vi) *l'istesso tempo*

B. Briefly describe the Gavotte



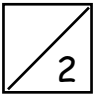
.....

.....

.....

.....

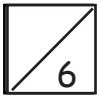
C. Write the open string tunings of the following instruments using appropriate clefs



i) cello

ii) viola

D. i) Is this semitone diatonic or chromatic?



.....

ii) Is this phrase diatonic or chromatic?

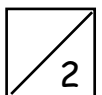
.....

iii) Name these ornaments

.....

.....

E. i) Explain the meaning of 'counterpoint'



.....

ii) Define $\frac{9}{8}$

.....