

Grade 1 Theory Test Paper... sort of

This test paper is DIFFERENT. It already has the answers in it (mostly wrong answers!) and your job is to be the teacher - you have to mark it.

When you've found all the mistakes, go on to the next few pages of this download. It's the EXACT SAME PAPER - this time with no answers already in it. See if you can learn from someone else's mistakes... and get 100%!

| | | |
|------------|-------|----------------|
| Question 1 | PITCH | Total Marks 17 |
|------------|-------|----------------|

A. Name these notes. Use words for #, b and ♯.

8

..... a flat b natrill d sharp c sharp

B. Write these notes.

- Use the note values specified.
- Use the signs for sharp, flat and natural

6

E natural as a crotchet on a ledger line

D flat as a minim in a space

C sharp as a semibreve on a line

Add the correct clef to these named notes.

3

B flat

E

E natural

A. Write the scale of F major

- Use the treble clef
- Use accidentals
- Write one octave descending
- Use crotchets
- Mark each tone with a slur
- Complete the scale with a double bar line

6



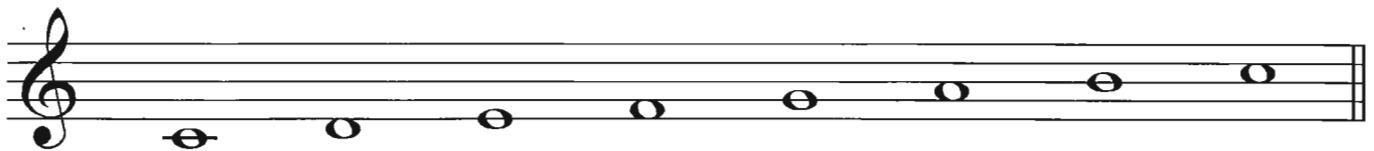
B. Add a clef and any accidentals necessary to make this the scale of G major

4



C. Name this scale and mark the semitones.

4



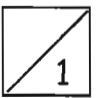
Name: *C major*

D. Write the correct scale degree numbers under the notes of this melody.



..... 6 4 2 1 6 4 7 3 6

E. Mark any intervals of a semitone in the above melody with a slur.



Question 3 INTERVALS AND CHORDS Total Marks 15

A. Write these intervals above the given tonic notes.



7th

8ve

2nd

4th

B. Name these intervals by number only.



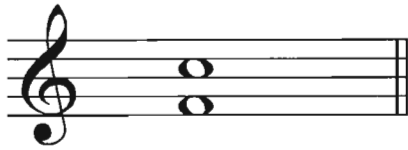
4

2

7

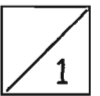
8

C.

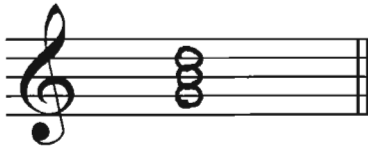
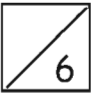


Is this interval a 4th?

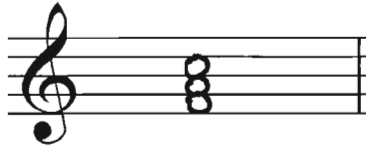
Yes or No? *Nope*



D. Write these tonic triads with their key signatures.



G major



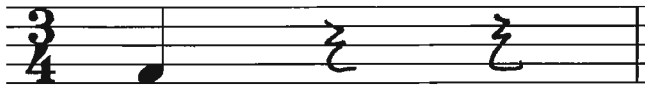
F major



C major

A. Complete each bar as directed.

6



2 rests



2 notes



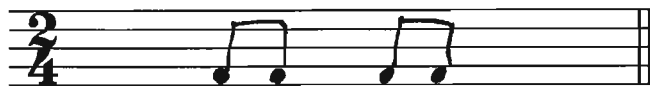
1 note 1 rest

B. Use two notes to complete each of these bars.

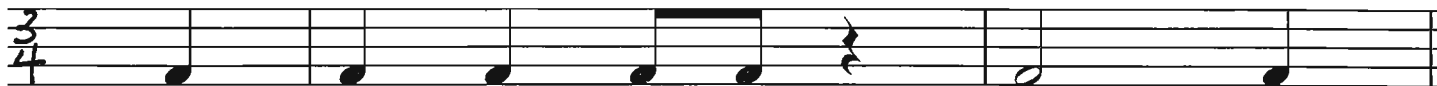
6



C. Complete the following bars using quavers correctly grouped.



D. Add the correct time signature to these rhythms

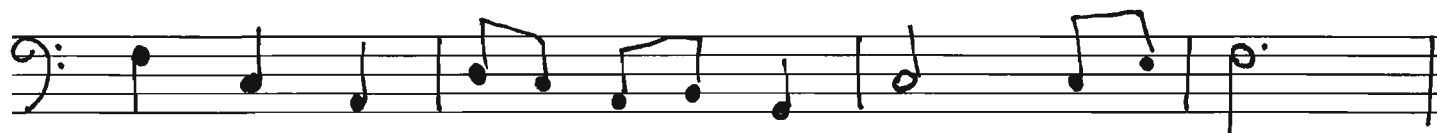


Question 5

TRANSPOSITION

Total Marks 12

Transpose this melody down into F major.



A. Study the melody then answer the questions below.

| |
|----|
| 10 |
|----|

Allegro

The musical notation shows a melody in treble clef, 3/4 time, and F major (one flat). The tempo is marked 'Allegro'. The melody is divided into 8 bars, numbered 1 through 8. Bar 1 begins with a piano (*p*) dynamic. Bar 3 features a slur over the quaver notes. Bar 7 contains a crescendo hairpin. Bar 8 concludes with a forte (*f*) dynamic and a repeat sign. The melody ends on a half note in the final bar.

- i. Name the key of the melody. F major
- ii. What is the meaning of the Italian Term at the beginning? Lively
- iii. Add a sign to show the quavers in bar 3 should be played smoothly.
- iv. Add signs to show the quavers in bar 7 should be played short and detached.
- v. Explain the time signature. 3 beats per bar
- vi. Does this melody contain any ties? Yes or no? No
- vii. Explain the sign under bar 7. Crescendo
- viii. Why are there only two beats in the last bar? Because one is
- missing
- ix. Add a sign to show that the last bar should be played loudly.
- x. Add a sign to show that the melody is finished.

B. Give the English meaning of the following terms or signs.





i) *ritenuto* immediately slower

ii) *rall.* gradually becoming softer

iii) *moderato* moderately

iv) *adagio* slowly

v)  a note with staccato on it

vi)  crescendo

Mark

100

How did you go marking this paper? Did you find lots of mistakes? It's a good idea to discuss all of them with your teacher. Talk about WHY some mistakes might happen e.g. not checking the clef, or not completing the question. Understanding the mistakes in this paper will really help you when you go on to try the same paper yourself. Good luck!

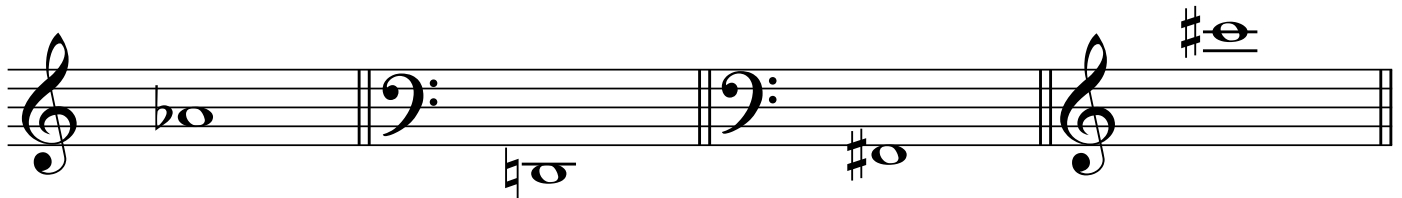
TEST PAPER

FIRST GRADE THEORY

Question 1 **PITCH** **Total Marks 17**

A. Name these notes. Use words for #, b and ♯.

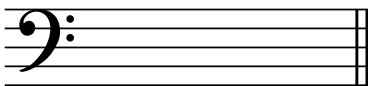
 8



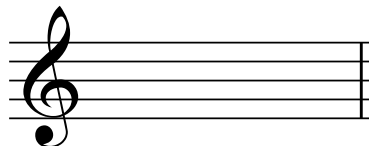
B. Write these notes.

- Use the note values specified.
- Use the signs for sharp, flat and natural

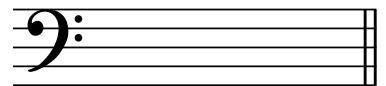
 6



E natural as a crotchet
on a leger line



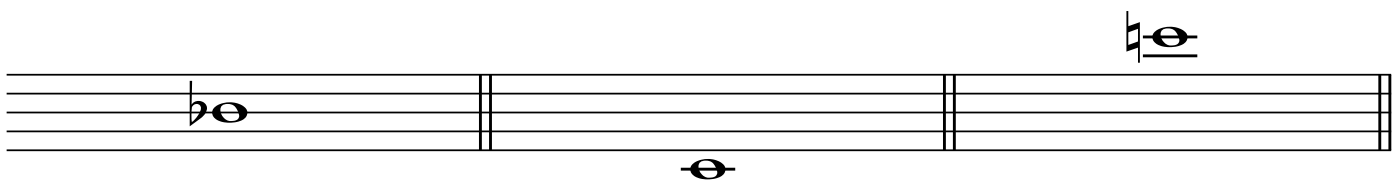
D flat as a minim
in a space



C sharp as a semibreve
on a line

Add the correct clef to these named notes.

 3

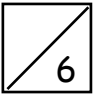


B flat

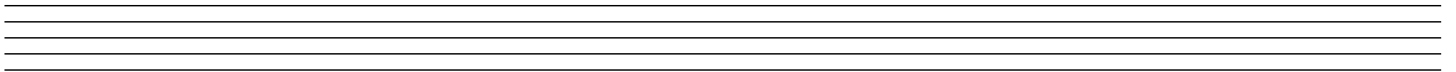
E

E natural

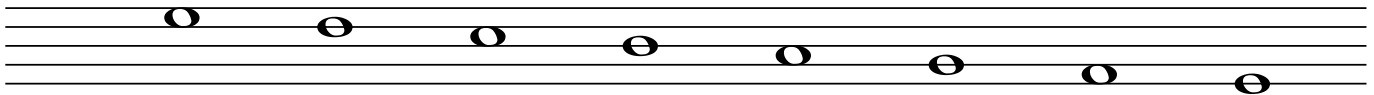
A. Write the scale of F major



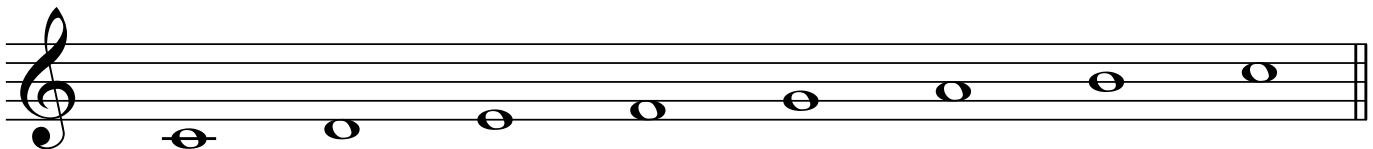
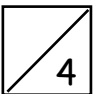
- Use the treble clef
- Use accidentals
- Write one octave descending
- Use crotchets
- Mark each tone with a slur
- Complete the scale with a double bar line



B. Add a clef and any accidentals necessary to make this the scale of G major



C. Name this scale and mark the semitones.



Name:

D. Write the correct scale degree numbers under the notes of this melody.



E. Mark any intervals of a semitone in the above melody with a slur.



Question 3

INTERVALS AND CHORDS

Total Marks 15

A. Write these intervals above the given tonic notes.



7th

8ve

2nd

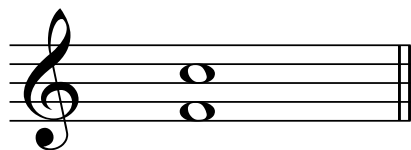
4th

B. Name these intervals by number only.



.....

C.

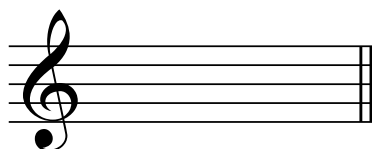


Is this interval a 4th?

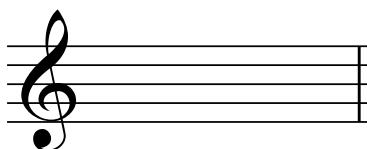
Yes or No?



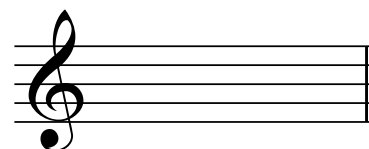
D. Write these tonic triads with their key signatures.



G major

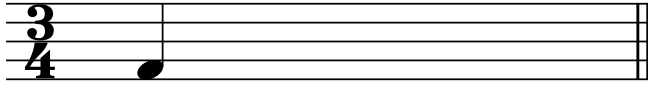
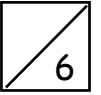


F major

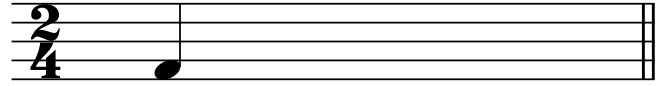


C major

A. Complete each bar as directed.



2 rests

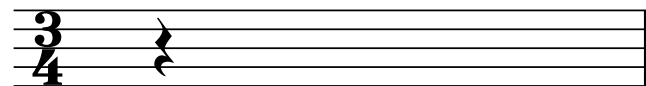
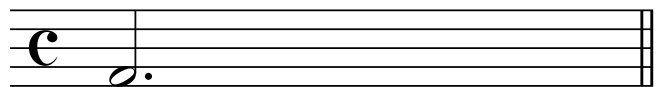
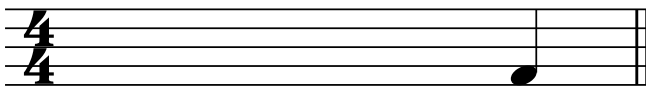
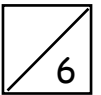


2 notes

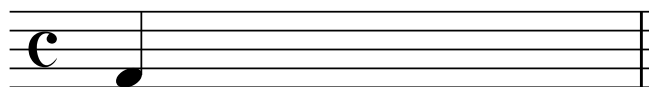
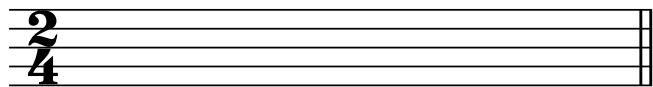


1 note 1 rest

B. Use two notes to complete each of these bars.



C. Complete the following bars using quavers correctly grouped.



D. Add the correct time signature to these rhythms

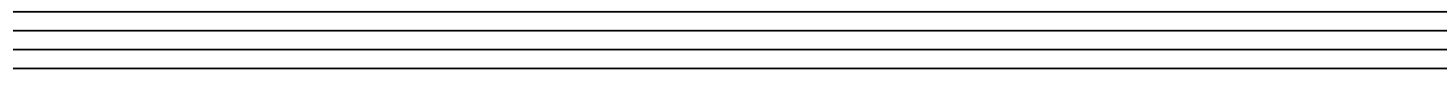


Question 5

TRANSPOSITION

Total Marks 12

Transpose this melody down into F major.



A. Study the melody then answer the questions below.

10

Allegro

- i. Name the key of the melody.
- ii. What is the meaning of the Italian Term at the beginning?
- iii. Add a sign to show the quavers in bar 3 should be played smoothly.
- iv. Add signs to show the quavers in bar 7 should be played short and detached.
- v. Explain the time signature.
- vi. Does this melody contain any ties? Yes or no?
- vii. Explain the sign under bar 7.
- viii. Why are there only two beats in the last bar?
-
- ix. Add a sign to show that the last bar should be played loudly.
- x. Add a sign to show the that the melody is finished.

B. Give the English meaning of the following terms or signs.




i) *ritenuto*

ii) *rall.*

iii) *moderato*

iv) *adagio*

v) 

vi) 